



Q
A

What is a human services worker?

Human services worker is a generic term for a professional who works with individuals seeking assistance with a wide variety of social, economic and developmental needs. Human services ranks among the top ten fastest-growing occupations in the next decade. Human services workers are trained in observation, recording, interviewing, communication techniques, behavior management, group dynamics, counseling, crisis intervention, case management and referral. High-growth areas within the human services field include substance abuse counseling, services for the aged and services for the developmentally disabled. Since these specialty services have the potential to assist agencies and families in the containment of medical costs, job opportunities are expected to increase.

Q
A

What duties do human services graduates perform?

Graduates may perform such duties as:

- Case work
- Mental health work
- Life-skills counseling
- Community outreach work
- Social services assistance
- Alcohol and/or drug counseling

Q
A

Where does a human services graduate work?

A human services graduate may be employed in a:

- Group home
- Halfway house
- Correctional center
- Mental retardation center
- Community mental health programs that deal with drug abuse, family violence, and the elderly.

Q
A

What is the income potential for a human services graduate?

Income varies depending on the type of position attained in any of the human services career concentrations. Entry-level workers average between \$15,000 and \$24,000 and experienced workers, depending on education and experience level, average \$20,000 to \$30,000.

Q
A

What will the human services degree allow me to do?

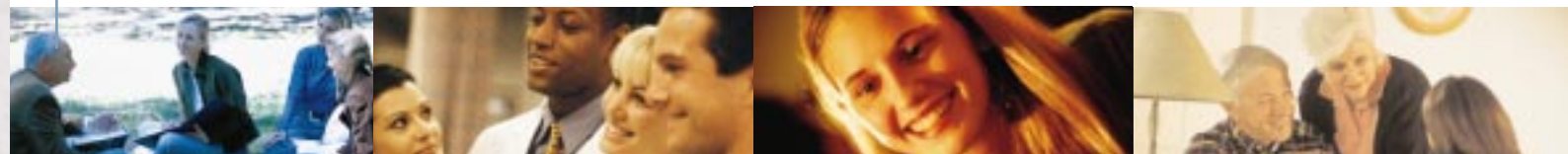
Earn an Associate of Applied Science degree in human services (AAS-HUMS) at Southwest and transfer into an undergraduate human services degree program offered at a four-year university.

Earn an Associate of Applied Science degree in social services (AAS-SOCS), or either of the technical certificates (Substance Abuse Counseling or Home Manager for Developmentally Delayed Adults) at Southwest and go to work immediately upon graduation.

Q
A

What is Southwest's employment rate for graduates of the human services program?

Southwest's employment rate for human services graduates generally exceeds 96 percent each year.





Q
A

Why choose the human services program at Southwest?

- Fully accredited programs by the Commission on Colleges of the Southern Association of Colleges and Schools
- Small classes for more personalized attention
- Flexible class schedules available at multiple campuses, centers, sites; and distance learning opportunities
- Affordable tuition
- Support services, including career counseling, free tutoring and career services, financial aid, job opportunity assistance and on-site child care services

Department of Education
Human Services Program
(901) 333-5345
www.southwest.tn.edu

Q
A

How do I apply for admission to Southwest?

- Complete application for Southwest.
- Submit your application and pay \$5 application fee to Bursar's Office.
- Request that an "official" copy of your high school/GED scores, college transcript(s) be sent to:
*Southwest Tennessee Community College
P.O. Box 780, Memphis, TN 38101-0780*
- Apply for financial aid (if applicable).
- Complete testing requirements.
- Complete new student orientation, either online or on campus.
- Review the College's academic calendar or printed schedule of classes for registration dates, times and locations.
- Meet with academic advisor.
- Register for classes online, via TRAVIS or in person.
- Pay your fees or ensure that your financial aid is in place for your course.

Admissions, Records, and Recruitment
(901) 333-5924

Financial Aid
(901) 333-4184 • (901) 333-5960

Advising, Counseling, and Articulation
(901) 333-4594 • (901) 333-5122

Southwest Tennessee Community College

P.O. Box 780

Memphis, TN 38101-0780

(901) 333-5000

1-877-717-7822 (out-of-state)

www.southwest.tn.edu

Southwest Tennessee Community College, a Tennessee Board of Regents institution, is an affirmative action/equal opportunity college.
0110475NEW03135HS

